



Australian and New Zealand Association of
Psychiatry, Psychology and Law (Queensland)

30TH ANNUAL CONGRESS

PREDICTION
THE HOLY GRAIL

SURFERS PARADISE, QUEENSLAND
26-29 August, 2010 Holiday Inn

PROGRAM & REGISTRATION

SUPPORTED BY



Queensland Government
Queensland Health



Taylor & Francis Group

The Congress

The Australian and New Zealand Association of Psychiatry, Psychology and Law (Queensland) is pleased to announce that the next congress will be held in Surfers Paradise, Queensland, Australia, from 26 - 29 August, 2010

The Congress theme, *Prediction: The Holy Grail*, is intended to look at the ethics and reliability of prediction – including biological markers, childhood antecedents to offending behaviour, risk assessment, and preventive detention. The theme will cover a broad range of topics from application of recent advances in neurobiology/genetics, through clinical aspects of risk assessment to efficacy of legislation (including sex offenders).

The Congress Committee hopes you will join us for what should be a very informative and thought-provoking gathering.

Ness McVie (Convenor) Committee: Scott Harden, Jay Hendricks, Dianne Pendergast, Russ Scott, Barry Thomas, Lynda Troy

The Keynote Speakers



Professor Susan Bailey *OBE MB ChB FRCPsych*

The first dual trained child and adolescent and forensic psychiatrist in the UK, Sue Bailey has practised as a Consultant since 1983 following graduation and post graduate training in medicine and psychiatry at the University of Manchester. She has published widely in the field of needs and risk assessment of young offenders with mental health problems, has supported the development of Adolescent Forensic Mental Health Services across the UK and in the Netherlands and Finland. In her clinical work she assesses and treats high profile young offenders and has a special interest in children who kill and young arsonists.

In her work as the first Professor of Child and Adolescent Forensic Mental Health in Europe (at the University of Central Lancashire) she works collaboratively with European and American partners on needs, risk, and human rights of young offenders.

In 2002 she was awarded the OBE for services to the Ministry of Justice in developing and improving mental health services for young offenders. She is called upon by the Department of Health and the Ministry of Justice to undertake specialist projects around the rights and appropriate care of young offenders.

As the Registrar of the Royal College of Psychiatrists she leads for the College on matters of Policy, Public Education, Membership and User and Carer participation. She co-edited the first textbook of Child and Adolescent Forensic Psychiatry and more recently has co-edited a user friendly book *The Young Mind* for use by parents and teachers.



The Hon. Ian Callinan *AC*

The Hon. Ian Callinan, AC, was educated at Brisbane Grammar School and the University of Queensland (LLB, 1960). He was admitted to the Queensland Bar in 1965 and practised as a barrister-at-law, becoming Queen's Counsel in 1978, and serving as President of the Queensland Bar Association (1984-87) and of the Australian Bar Association (1984-85), before being appointed to the High Court bench in 1998, from which he retired in 2007. Prior to that time he held several company directorships (QCT Resources Ltd, Santos Ltd, Queensland Coal Resources Ltd), while also acting as Trustee of the Queensland Art Gallery (Chairman, 1997-98), the Brisbane Community Arts Centre and the Brisbane Civic Art Gallery Trust. Since retirement he has chaired the Commission of Inquiry into the equine influenza outbreak and now acts as a mediator and arbitrator.



Dr Andrew Carroll

Andrew Carroll is a consultant forensic psychiatrist at Forensicare in Melbourne and Senior Lecturer in Forensic Psychiatry at the Centre for Forensic Behavioural Science, Monash University. He studied psychology and medical sciences at the University of Cambridge, before doing clinical training at the University of Oxford. After training in psychiatry in Yorkshire, he worked as a Research Fellow for a year at Edinburgh University, then emigrated to Australia in 1998 to take up a consultant position with Forensicare. After several years working in a leadership role at their community forensic mental health service, he moved to the inpatient rehabilitation service at Thomas Embling Hospital in 2009.

He has a longstanding interest in multidisciplinary education and training and helped to establish, and now coordinates, the Graduate Program in Forensic Behavioural Science at Monash University. He is Director of Training in Psychiatry at Forensicare and Chair of the RANZCP Subcommittee for Advanced Training in Forensic Psychiatry. His research interests include forensic psychiatric rehabilitation and violence risk assessment. He has published on topics including insight in psychosis, risk assessment tools, decision-making and forensic rehabilitation.



The Hon. Justice Peter Murphy

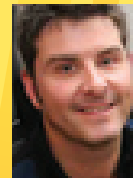
Justice Murphy began his legal career as a solicitor in 1978. He went to the Bar in 1990 and took silk in 2004. He was appointed a judge of the Family Court of Australia on 11 October, 2007.

Prior to his Honour's appointment, he practiced predominantly in family law but also had a significant criminal practice. His Honour was also an accredited mediator and arbitrator and had a busy practice as a mediator.

His Honour was a member of the Executive of the Family Law Section of the Law Council of Australia and of the Australian Institute of Family Law Arbitrators and Mediators.

Justice Murphy was a contributing editor to the Lexis Nexis Family Law in Australia series and has written and presented many papers on family law and advocacy throughout Australia. Prior to his appointment as a judge, his Honour was a part-time member of each of the Anti-Discrimination and Legal Practitioners Tribunals in Queensland.

His Honour is currently the Co-ordinating Judge for the Northern Region and is the judge responsible for management of the Brisbane Registry's child abuse ("Magellan") list and international child abduction ("Hague") list.



Professor Stephen Porter *PhD*

Dr. Stephen Porter is professor, researcher, and consultant in the area of psychology and law. He received his Ph.D. in forensic psychology from UBC and completed his internship in a federal penitentiary. After a decade as a faculty member at Dalhousie University, where he created the first

undergraduate program in forensic psychology in Canada, he returned to UBC (Okanagan campus) as a professor of psychology and is the Director of the Centre for the Study of Psychology and Law. Dr. Porter has published numerous scholarly articles on deception detection, eyewitness memory, domestic and sexual violence, psychopathy, and homicide. He was awarded the President's New Investigator Award from the Canadian Psychological Association and is the co-author of the popular 2006 textbook *Forensic Psychology*. As a registered forensic psychologist, Dr. Porter is consulted by prosecutors and defense attorneys and has been qualified as an expert witness in trials, Dangerous Offender hearings, and sentencing hearings. Further, he is regularly consulted by police in unsolved crime investigations. He has provided training in deception detection and investigative interviewing to law enforcement, judges, and other adjudicators. His research is funded by the Social Sciences and Humanities Research Council of Canada and the Natural Sciences and Engineering Research Council of Canada.

HOST CITY

Surfers Paradise



Surfers Paradise has something for everyone! As one of Australia's leading tourist destinations, Surfers Paradise attracts millions of visitors each year from around the world to enjoy the crystal clear ocean, sandy beaches, championship golf courses and the lush green hills of the surrounding Hinterland. A spectacular year-round climate, excellent restaurants catering for all tastes, great shopping and proximity to fantastic family entertainment theme parks makes Surfers a great place to work and play.



Congress Venue

**Holiday Inn Surfers Paradise,
22 View Avenue, Surfers Paradise.**

The Holiday Inn Surfers Paradise is perfectly located in the heart of Australia's most popular resort destination surrounded by boutiques, restaurants, lively entertainment and just 50 metres from magnificent Surfers Paradise beach. It is convenient to all Gold Coast attractions including numerous international golf courses, shopping malls and theme parks.

ANZAPPL

Established in the late 1970s, the Australian and New Zealand Association of Psychiatry, Psychology and Law (ANZAPPL) is committed to exploring the relationship between psychiatry, psychology and the law.

For further information about ANZAPPL, please go to: www.anzappl.org

Congress Outline

The first day of the Congress (Thursday 26 August) will be devoted to optional workshops, followed by the **Congress Welcome Reception** and **Poster session**.

Please note that the optional workshops have limited numbers. Places will be allocated on a first come - first served basis.

Keynote and invited addresses, paper sessions and a feature session will fill the remaining 2.5 days, with the **Congress Dinner** on the Friday evening.

Social Program

The **Congress Welcome Reception** will be held at the Holiday Inn on Thursday 26 August at 5.30pm. This function is included in the Full Congress fee; other delegates and partners are welcome to purchase tickets to attend at \$45 per person.

The **Congress Dinner** will be held on Friday 27 August in the Princeton Ballroom at Bond University with its sandstone arches, lakeside settings and landscaped grounds. Coaches will depart from the Holiday Inn at 6.30pm and return from Bond University at 10pm. The Congress Dinner (cash bar after arrival drinks) and return bus transfer are included in the Non-student Full Congress fee; students, other delegates and partners are welcome to purchase tickets to attend at \$85 per person. Please note that places at the dinner are limited and will be allocated on a first come basis.

Provisional Program

Thursday, 26 August 2010

Optional Workshops

From 8:30am Registration

9:30am - 5:00pm OPTIONAL WORKSHOP 1

Using Your Expertise to Meet the Needs and Manage the Risks Posed by Young Offenders with Mental Health Problems

Susan Bailey

The workshop will focus on how, as child adolescent and family mental health experts, you can engage with multi agency systems to safely and effectively and appropriately contribute to multiagency service delivery.

Topics include:

- What you already know and do
- How to apply it in the arena of forensic mental health
- Basic tool kit risk assessment
- Aggression and violence, fire setting, sexually abusive behaviours
- Needs assessment
- Multiagency risk management
- Evidenced based intervention
- Transitioning to adulthood
- Emerging anti social personality disorder
- Managing teams, working across teams
- Shaping policy

9:30am - 5:00pm OPTIONAL WORKSHOP 2

The Truth About Lies: Using Psychology to Detect Deception

Stephen Porter

Deception is a common element of human social interaction and occurs all too frequently. Yet, without training, most people (professionals and laypersons alike) "flip a coin" when attempting to catch liars. However, psychological science has revealed behavioural cues that are reliably associated with deception and can be observed by the trained eye. Research by the presenter has demonstrated that empirically-based training can lead to a substantial improvement in deception detection ability. This workshop will offer comprehensive, evidence-based training in detecting deception, through lecture, practice, feedback, and analyses of real-world videotaped examples of highly motivated deceivers. Part 1 of the workshop focuses on "myth-busting", how to avoid common pitfalls, and the need for critical thinking. A theoretical model and a false murder conviction case (Stephen Truscott) in Canada will be used to demonstrate how such pitfalls occur. Part 2 of the workshop will address the assessment of deception by close attention to: body language, facial expressions, and statements as in police investigations in which the presenter has been consulted. Further, active interviewing strategies aimed at enhancing deception detection ability will be described. This training will serve as a practical guide to enhance participants' ability to detect lies in the workplace and everyday life.

5:30pm - 7:00pm Congress Welcome Reception and Posters

Posters will be on display throughout the congress and presenters available to discuss them during tea breaks. Posters accepted to date:

Children's Experience of Legal Proceedings: NSW Children's Court and Federal Family Court
Heidi Brummert Lennings and Kay Bussey

Examining the Interface: Victoria Police and the Intellectually Disabled
Marie Henshaw & Stuart Thomas

An Indian Follow-Up Study of Post Traumatic Stress Symptomatology in Adolescent Girls
Pankaj Kumar, M.S.Bhatia, Sunil Mittal

Lessons From Confessions: Case Study of a Psychopathic Serial Killer
Yongtao Li, Liyun Zhang and Jane Goodman-Delahunty

Children's Eyewitness Testimony: A Comparison of Mainstream Children and Children with an Intellectual Disability
Rachel Parsons and Belinda L. Guadagno

Intellectually Disabled Individuals and the Police Interview: The Independent Third Person Perspective
Ben Spivak and Stuart Thomas

Friday, 27 August 2010

7.45am Registration and arrival coffee

8:45am - 10:45am OPENING PLENARY SESSION

8:45am Welcome and Opening

Ness McVie

9:00am Young Offenders. Aliens, Alienating or Alienated

Susan Bailey

10:00am Keynote Address

The Honourable Justice Peter Murphy

10.45 am Morning tea

11:15am - 12.45pm

PARALLEL SESSIONS 1A, 1B, 1C AND 1D

Session 1A: Risk

11:15am Why Bayes' Theorem is Important for Decision Making in Violence Risk Assessment
Michael Davis

11:35am Too Many Explanations in Mental Health and Too Few Predictions: The Burden of Being Able to Explain Everything Bad and Predict Nothing Good
Toni Anderson

11:55am Corporate Risk Assessment Applied to the Clinical Context: What Can Accountants Teach Clinicians?
Linda Bennett

12:15pm Prediction and Crystal Ball Gazing
Kaye Carncross and Peter Mc George

12:35pm Discussion

Session 1B: Diverse Issues

11:15am Criminal Proceedings: The Case for a Different Approach
Neville Barber

11:35am Perceptions of Dangerousness: Lessons from Courts, Jurors, Expert Evidence, Conciliation and Peacekeeping: Implications for Human Rights
Howard Bell

11:55am Risk in Civil Commitment
Penny Weller

12:15pm The Assessment of Psychopathy in an Australian Community Sample
Bruce Watt, Nathan Brooks, Ryann Creary

12:35pm Discussion

Session 1C: Child and Youth

11:15am The First 12 Months of a New Australian High Secure Adolescent Forensic Psychiatric Unit
John Kasinathan, Claire Gaskin and Kenneth Nunn

11:35am MHATODS: A New Paradigm for Adolescent Detention Centre Mental Health
Stephen Stathis

11:55am The Prevalence of Mental Health Disorders in Young People Presenting to the Children's Court: A Queensland Perspective
Tasneem Hasan

12:15pm Collaborative Service Delivery within a Juvenile Detention Facility
Chantelle Warren and Storm Cory

12:35pm Discussion

Session 1D: Workshop

The High Risk Offender Management Unit: A Framework to Manage High Risk Sexual Offenders Subject to Civil Commitment Orders: A Queensland Corrective Services Initiative
Joel Smith

12.45pm Lunch

1.45pm - 3.15pm

PARALLEL SESSIONS 2A, 2B, 2C AND 2D

Session 2A: Risk

1:45pm An Applied Risk Management Framework: A Multi-dimensional Approach to Considering Risk in both Sexual and Violent Offending
Linda Bennett

2:05pm Prediction of Risk of Sex Offenders: A Review of the Victorian Experience
Vincenzo Caltabiano

2:25pm Risk Assessment and Preventive Orders – The New Zealand Experience
Warren Brookbanks and Kris Gledhill

2:45pm The Utility of the Risk of Sexual Violence Protocol (RSVP) in Assessing Serious Sex Offenders in NSW
Anthony Samuels

3:05pm Discussion

Session 2B: Dangerous Prisoners/Sex Offenders

1:45pm The Consequences of Predicted Risk in Serious Sex offenders in South Africa and Australia: A Therapeutic Jurisprudence Analysis
Astrid Birgden and Anni Hesselink

2:05pm Pre-sentence Risk Assessments for Sexual Offenders: How Effective Are They?
Lauren Gradstein

2:25pm Sex Offenders: Predicting Risk of Future Reoffending
Ronelle Jarvis

2:45pm Beware of False Prophets: The Scientific Limits of the Prediction of Harm
Olav Nielssen

3:05pm Discussion

Session 2C: Children and Youth

1:45pm Mental Health and Trauma in Young Offenders
Claire Gaskin

2:05pm Understanding, Treating and Preventing Criminal Behaviour via a Developmental Psychological Needs Model
Mercurio Cicchini

2:25pm What Do Young Offenders Have to Say About Why They Offend?
Aldis Putniš

2:45pm Vulnerable Militant Youth of Swat
Feriha Peracha

3:05pm Discussion

Session 2D: Symposium: Equivocal Deaths and Coroner's Decision Making (Roz Robertson - Convenor)

1:45pm Predicting Manner of Death Determinations
Megan Laugher and Tess Crawley

2:15pm Psychological Autopsy: Child Deaths by Choking Game
Roz Robertson and Kellie Meek

2:45pm Identifying Hidden Suicides
Caroline Gunn and Tess Crawley

3.15pm Afternoon tea

3.45pm - 5.15pm

PARALLEL SESSIONS 3A, 3B, 3C AND 3D

Session 3A: Risk

- 3:45pm Risk and Extending the Care Orders of Intellectually Disabled Offenders in New Zealand
Anthony Duncan
- 4:05pm The Assessment of Static and Dynamic Risk in Offenders with an Intellectual Disability: An Evaluation of the Assessment of Risk and Manageability of Intellectually Disabled Individuals who Offend (the ARMIDILO)
Frank Lambrick, Keith McVilly and Doug Boer
- 4:25pm Risk Assessment in Intellectually Disabled Offenders: Validation of Suggested Adaptations to the Historical, Clinical, Risk Management-20
Hielkje Verbrugge, Jane Goodman-Delahunty, Matthew Frize
- 4:45pm The Effects of Compensation Claim Lodgement on Health Outcome Developmental Trajectories Following Whiplash Injury: A Prospective Study
Justin Kenardy, Michele Sterling, Joan Hendrikz
- 5:05pm Discussion

Session 3B: Diverse Issues

- 3:45pm Queensland Legislated Medicolegal Reports and Self-directed Training for Psychiatrists
Scott Natho and Elissa Waterson
- 4:05pm Psychiatric Diagnosis and the Mental Health Defence – Drawing the Link
Anthony Tie and Jillian Spencer
- 4:25pm Testing an Integrated Theoretical Model of Stalking Violence
Carleen Thompson, Susan Dennison, Anna Stewart
- 4:45pm The Court Liaison Assessment Screen for Stalkers (CLASS)
Jane Phillips and Michele Pathé
- 5:05pm Discussion

Session 3C: Children and Youth

- 3:45pm The Other Trajectory
Anne Jeffs and Teresa Flower
- 4:05pm But Is It Real? Is Risk Assessment Too Limited a Paradigm in Child Protection?
C. J. Lennings and A. Bolton
- 4:25pm Predicting Childhood Capacity: Re-Evaluating The Gillick Test
Nicholas Lennings and George Tomassy
- 4:45pm Let's be Mature about This: Young People, Decision-making and Their Health
George Tomassy
- 5:05pm Discussion

Session 3D: Workshop

Assessment and Formulating Risk of Violence in Adolescents
Toni Anderson and Claire Gaskin

7:00pm for 7:30pm Congress Dinner at Bond University

Coaches leaves Holiday Inn for Bond University at 6:30pm SHARP

Saturday, 28 August 2010

8.15am Registration and arrival coffee

8:45am - 10:45am PLENARY SESSION

- 8:45am **Clinical Intuition in Risk Assessment: A Suitable Case for Rehabilitation?**
Andrew Carroll
- 9:45am **Preying for Parole: Psychopathy, Violence and the Art of Manipulation**
Stephen Porter

10.45am Morning tea

11.15am - 1.15pm

PARALLEL SESSIONS 4A, 4B AND 4C

Session 4A: Legal Issues

- 11:15am Slaying the Dragon: Is There Such a Thing as Litigation Psychosis?
Malcolm Duncan
- 11:45am Preventing Plagiarism
Ian Freckelton
- 12:15pm The CSI-effect: Do TV Crime Shows Influence Jury Verdicts?
Jane Goodman-Delahunty
- 12:45pm Sentencing by Videolink: Up in the Air?
Anne Wallace, Emma Rowden, Jane Goodman-Delahunty and David Tait

Session 4B: Dangerous Prisoners/Sex Offenders

- 11:15am Perceptions of the Effectiveness of Preventive Detention Regimes in Reducing Risk
Patrick Keyzer and Bernadette McSherry
- 11:45am Dangerousness and Preventive Action – The English Experience
Kris Gledhill
- 12:15pm Misuse of Sentencing and Risk Reports – Is Preventive Detention Actually Arbitrary Detention?
Tony Ellis
- 12:45pm The Outcomes of the United Nations Human Rights Committee Communications on Preventive Detention of Serious Sex Offenders in Queensland and New South Wales
Patrick Keyzer

Session 4C: Issues in Prediction

- 11:15am The Prediction of Adult Criminal Behavior. What We Can Learn From Other Areas
Catherine Ferguson and Alfred Allan
- 11:45am Prediction of the Risk of Continuing Violence to Women Through Inadequate Sentencing of Male Offenders from Aboriginal Communities in the Northern Territory
Andrew Hemming
- 12:15pm When the Predictable is Unacceptable – The Incarceration and Mental Health of Indigenous Australians
Ed Heffernan and Kimina Andersen
- 12:45pm Offender Rehabilitation and Reintegration: An Uneasy Alliance
Terry Bartholomew and Lesley Hardcastle

1.15pm Lunch

2:15pm - 4:00pm FEATURE SESSION

25 years of Mental Health Court:
How the Forensic System Works in Queensland.

4.00pm Afternoon tea

4:30pm - 5:15pm ANZAPPL AGM

Sunday, 29 August 2010

8.30am Arrival coffee

9:00am - 10:30am

PARALLEL SESSIONS 5A, 5B AND 5C

Session 5A: Arson/Young Offenders

- 9:00am Putting the Pieces Together – Exploring the Way Forward in Risk Assessment of Arson Offenders
Rebekah Doley
- 9:20am Treating Arson Offenders – Challenges, Pitfalls and Joys
Rebekah Doley
- 9:40am Arson Recidivism of Persons Referred to Queensland's Mental Health Court
Bob Green
- 10:00am What Information Do We Need to Predict Recidivism by Serious Young Offenders?
Paul Nelson, Louisa Degenhardt, Dianna Kenny, Chris Lennings
- 10:20pm Discussion

Session 5B: Prison/Diversion

- 9:00am Mental Health Disorders and Re-offending Among NSW Prisoners: Comorbid Substance and Non-substance Mental Health Disorders
Nadine Smith and Lily Trimboli
- 9:20am Beyond the Prison Gate: Improving Continuity of Care for Prison Mental Health Service Patients
Robert Pedley, Anthony Tie and Jillian Spencer
- 9:40am "Back On Track": Transition from Prison to Community for People with a Serious Mental Illness
Michelle Denton and Andrew Hockey
- 10:00am Diversion from Custody a Shared Clinical Judgement?
Will Brennan and Lorraine Waters
- 10:20pm Discussion

Session 5C: Risk

- 9:00am Risk Intervention Framework - A Structured Case Consultation Process for a Community Forensic Outreach Service
Bernadette McDermott
- 9:20am Alternatives to Imprisonment for the Punishment of Criminal Contempts
Suzie O'Toole
- 9:40am Towards a Model of Clinical and Academic Partnerships; New Insights Into Improving Client Risk Assessment Strategies
Andrea Gordon, Chris Johns, Roy Drew, Eddie Hedges, Nicholas Procter
- 10:00am Applying Structured Dynamic Risk and Protective Assessment with Parolees: Lessons from Implementation of the DRAOR by Probation Officers in New Zealand
Nick J Wilson and Armon Tamatea
- 10:20pm Discussion
- 10.30am Morning tea

11:00am - 1:15pm CLOSING PLENARY SESSION

11:00am Keynote Address

The Hon. Ian Callinan

12:00pm Policing the Mentally Ill: In the Firing Line

James Oglloff

1:00pm Closing Comments

General Information

Posters – Late Submissions

The Congress Committee will accept additional proposals for poster presentations. Abstracts (300 words maximum), along with a biographical paragraph (100 words maximum) must be submitted by email to: info@conorg.com.au by Friday 23 July 2010.

Congress Registration and Workshop Fees

All Congress and Workshop fees are shown on the Registration Form.

All fees are in Australian dollars.

- Workshop fees include morning and afternoon tea and lunch.
- Non-student Full Congress Registration includes catering throughout the congress, the Thursday Welcome Reception, and the Friday Congress Dinner (cash bar).
- Day Registration includes catering on either Friday or Saturday, and the Sunday program.
- The student rate is only available to those who submit evidence of their full-time, non-salaried status with their registration form; fees include catering throughout the congress and the Welcome Reception but do not include the Congress Dinner.
- Split Registrations will be allowed but there will be one congress bag and Book of Abstracts per registration.

To obtain the Early Bird rate payment must be received by 23 July, 2010.

Please Note: *If your funding for attendance is delayed, please register your intention to attend by sending/faxing the Registration Form with an explanatory note. Unless payment is received by 23 July the higher registration rate will apply*

Receipts will be emailed on receipt of payment.

Cancellations

Cancellations must be advised in writing by 30 July 2010; there is a \$125 cancellation fee per registration. After that date, refunds will only be issued in exceptional circumstances, but substitute delegates will be accepted. Please note that cancellation may result in loss of hotel payments.

Accommodation

Accommodation at special congress rates has been reserved as follows:

Holiday Inn, 22 View Avenue, Surfers Paradise (www.holidayinnsurfersparadise.com.au)

- Single, double or twin room, room only \$150 per night
- Single, double or twin room, with one buffet breakfast \$170 per night
- Double or twin room, with two buffet breakfasts \$190 per night

To obtain these rates, all accommodation must be booked and through The Conference Organiser Pty Ltd and will be allocated on a strict priority of receipt basis.

Please book early as we have blocked a limited number of rooms. We are obliged to release our accommodation blocks 30 days before the congress; after this time we will attempt to secure accommodation on an individual basis.

It is necessary to pay for all accommodation charges at the time of registration to obtain these rates.

Please Note: Special congress accommodation rates have been negotiated for the congress prior to the printing of the Registration Brochure. The congress organisers accept no responsibility if the hotels offer "special rates" or "standby rates" at their discretion.

Getting to Surfers Paradise from Coolangatta / Gold Coast airport

By taxi: approximately \$55

Gold Coast Tourist Shuttle Service operates airport transfers from Gold Coast Airport to most registered holiday accommodation on the Gold Coast.

Go to: www.gcshuttle.com.au/sit_gcs_airport_transfers.htm or call 1300 655 655 if you wish to pre-book.

Parking

Complimentary carparking is available for in-house guests.

Car parking is available for full day conference delegates at \$9.00 per vehicle (price subject to change). Delegates to park in the Piazza car park adjoining the Holiday Inn Surfers Paradise driveway. Delegates will drive up the ramp to the car park, and will be able to access the hotel via the lift.

Insurance

Delegates are encouraged to take out personal travel and medical insurance which includes loss or damage of personal possessions and loss of accommodation payments and registration fees through cancellation.

More Information

For further details regarding the Congress, please contact:

The Conference Organiser Pty Ltd
146 Leicester Street
Carlton, VICTORIA 3053, AUSTRALIA

Email: info@conorg.com.au

Phone: Australia: (03) 9349 2220

International: +613 9349 2220

If you need extra copies of this brochure, you can download it from our website: www.conorg.com.au

DISCLAIMER:

At the time of printing, all information contained in this brochure is correct; however, the organising committee, its sponsors and its agents cannot be held responsible for any changes to the final structure or content of the programs, or any other general or specific information published in this brochure. In the event of industrial disruption or other unforeseen circumstances that disrupt the running of the congress, the organising committee, its sponsors and its agents accept no responsibility.

Registration / Accommodation Form

ANZAPPL 30th ANNUAL CONGRESS. Surfers Paradise, 2010
ABN: 22 099 354 060 (The Conference Organiser Pty Ltd)

Please Note: • All fees are in Australian dollars. • This form is a tax invoice when completed. • All fees include 10% GST.

Section A : Personal Details

Prof/Dr/Mrs/Ms/Mr:
(First Name) (Last Name)

Organisation:

Address:

Post Code:

Phone: (.....) Mobile:

Email:

Special requirements (dietary, disability etc.):

Section B : Membership of ANZAPPL

If you would like to become a member of ANZAPPL and avail yourself of the cheaper Member's fees for the congress, please indicate this below. The membership will be for the period 1 July to 31 December 2010, and you will receive 2 issues of the ANZAPPL Journal *Psychiatry, Psychology and Law*. Information regarding ANZAPPL membership can be found at: <http://www.anzappl.org>

I enclose payment of \$75 for **ANZAPPL Membership** for the period 1 July to 31 December 2010

I enclose payment of \$30 for **ANZAPPL Student Membership** for the period 1 July to 31 December 2010 **>>> Membership Total: \$**

Section C : Preferred Sessions

To enable us to assign sessions to appropriate rooms, please circle the sessions you anticipate attending:

Friday 1A 1B 1C 1D | 2A 2B 2C 2D | 3A 3B 3C 3D **Saturday** 4A 4B 4C **Sunday** 5A 5B 5C

Section D : Congress & Workshop Registration

ANZAPPL Members	Payment received up to 23 July	Payment received after 23 July
Congress only	\$520	\$595
Congress + 1 full-day workshop	\$685	\$760
One full-day workshop only	\$240	\$315
Congress Day Registration	\$265	\$340

Day registrants please indicate which day you will attend:

Friday Saturday

If booking a workshop for Thursday 26 August, please indicate the one you wish to attend:

Workshop 1 (Susan Bailey: 9.30am - 5.00pm)

OR

Workshop 2 (Stephen Porter: 9.30am -5.00pm)

Non-Members	Payment received up to 23 July	Payment received after 23 July
Congress only	\$585	\$660
Congress + 1 full-day workshop	\$750	\$825
One full-day workshop only	\$290	\$365
Congress Day Registration	\$315	\$390

Day registrants please indicate which day you will attend:

Friday Saturday

If booking a workshop for Thursday 26 August, please indicate the one you wish to attend:

Workshop 1 (Susan Bailey: 9.30am - 5.00pm)

OR

Workshop 2 (Stephen Porter: 9.30am -5.00pm)

ANZAPPL Student Members <i>Full-Time, Non-Salaried</i>	Payment received up to 23 July	Payment received after 23 July
Congress only	\$405	\$480
Congress + 1 full-day workshop	\$520	\$595
One full-day workshop only	\$130	\$205
Congress Day Registration	\$205	\$280

Day registrants please indicate which day you will attend:

Friday Saturday

If booking a workshop for Thursday 26 August, please indicate the one you wish to attend:

Workshop 1 (Susan Bailey: 9.30am - 5.00pm)

OR

Workshop 2 (Stephen Porter: 9.30am -5.00pm)

Student Non-Members <i>Full-Time, Non-Salaried</i>	Payment received up to 23 July	Payment received after 23 July
Congress only	\$440	\$515
Congress + 1 full-day workshop	\$560	\$635
One full-day workshop only	\$140	\$215
Congress Day Registration	\$220	\$295

Day registrants please indicate which day you will attend:

Friday Saturday

If booking a workshop for Thursday 26 August, please indicate the one you wish to attend:

Workshop 1 (Susan Bailey: 9.30am - 5.00pm)

OR

Workshop 2 (Stephen Porter: 9.30am -5.00pm)

>>> Congress / Workshop Total: \$

Registration / Accommodation Form *continued*

Section E: Social Functions

FULL REGISTRANTS (non-students):

The **Welcome Reception** and **Congress Dinner** (with return bus transfers) are included in the Congress registration fee. Please tick the box if you will attend; *failure to indicate will be registered as non-attendance.*

I will attend the Welcome Reception I will attend the Congress Dinner I require coach transfers to the Dinner

FULL REGISTRANTS (students):

The **Welcome Reception** is included in the student registration fee. Please tick the box if you will attend; *failure to indicate will be registered as non-attendance.*

I will attend the Welcome Reception

Additional tickets for the Welcome Reception and Congress Dinner are available for students, partners, or others who wish to attend.

I enclose payment for additional Welcome Reception tickets @ \$45 ea. \$

I enclose payment for additional Congress Dinner tickets @ \$85 ea. \$

>>> **Social Functions Total: \$**

Section F: Accommodation *Pre-payment is required to guarantee your booking*

Please reserve accommodation for me as follows:

Holiday Inn, 22 View Avenue, Surfers Paradise

- Single, double or twin room, room only : \$150 per night
 Single, double or twin room, with one buffet breakfast : \$170 per night
 Double or twin room, with two buffet breakfasts : \$190 per night

Single Double Twin Smoking Non-smoking Date in: Date out:

If sharing with another delegate, their name:

>>> **Accommodation Total: \$**

Section G: Payment Summary

ANZAPPL Membership \$
Congress / Workshop \$
Social Functions \$
Accommodation \$
TOTAL \$

Please Note:

Payments from outside Australia must be by credit card (Mastercard or Visa only) or by bank draft or order (in Australian dollars drawn on an Australian bank). Personal cheques or payments in other currencies cannot be accepted.

I enclose my cheque made payable to "The Conference Organiser Pty Ltd" **OR**

Please debit my credit card \$ (AUD). Mastercard Visa

Card Number: _____

Name on card:

Expiry: / Signature:



SEND FORM WITH PAYMENT TO:

The Conference Organiser
146 Leicester Street
Carlton VICTORIA 3053

Fax: Australia: (03) 9349 2230

International: +613 9349 2230

Receipts will be emailed on receipt of payment.

PRIVACY STATEMENT: Your personal information on the registration form will be used by The Conference Organiser Pty Ltd and ANZAPPL to administer the congress and to notify you of similar future events. Your name and organisation will appear on the list of delegates to be included in the Book of Abstracts. For those with special requirements, your name may be disclosed to the congress venue for access and catering requirements. Should you not wish for your details to be used for these purposes, please contact The Conference Organiser as soon as possible.